

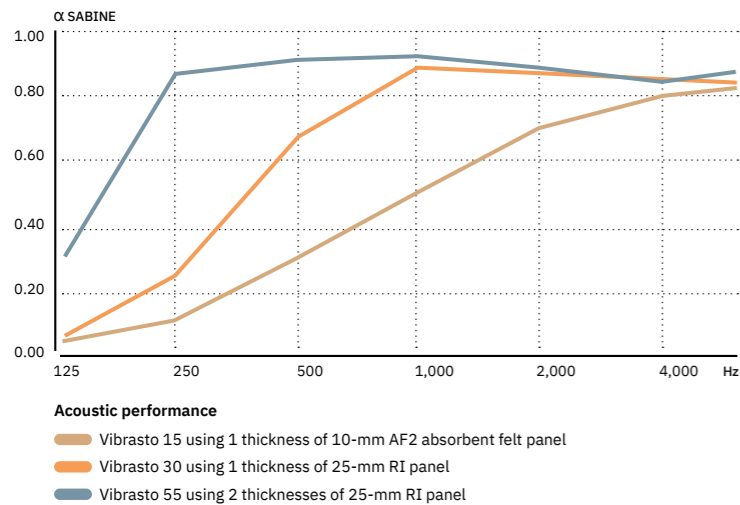
# **Vibrasto acoustic cladding**



**Vibrasto** is one of Texaa's emblematic products. It is a flexible acoustic cladding that can be stretch-fitted to walls, ceilings or furniture.

Its performance depends on its thickness: choose from the three available depending on the requirements to be met.

It is adaptable and easy to fit, and provides great creative scope.



See updated environmental data on [www.texaa.com](http://www.texaa.com)



Vibrasto disappears when applied in a light colour to the ceiling. Le Gallay bar in Lyon in 2021.



The installation system provides a perfect finish with three-dimensional shapes and any type of inclusion (access hatches, lighting, loudspeakers, fans, etc.). Vibrasto on the ceiling in the building industry and trade apprentice training centre in Saintes in western France. François Poirier-Bordage Architects (Atelier PBa), 2022.





Vibrasto ceiling cladding with complex layout and multiple inclusions.  
Monte Carlo, with kind permission from SBM. Architects: Rogers Stirk  
Harbour+Partners, UK and Alexandre Giraldi, Monaco, 2019.





Vibrasto with its range of colours can be used to bring life and organisation to a space. Contemporary music room at Quai M a live music venue in La Roche sur Yon in western France. Compagnie Architecture, 2022



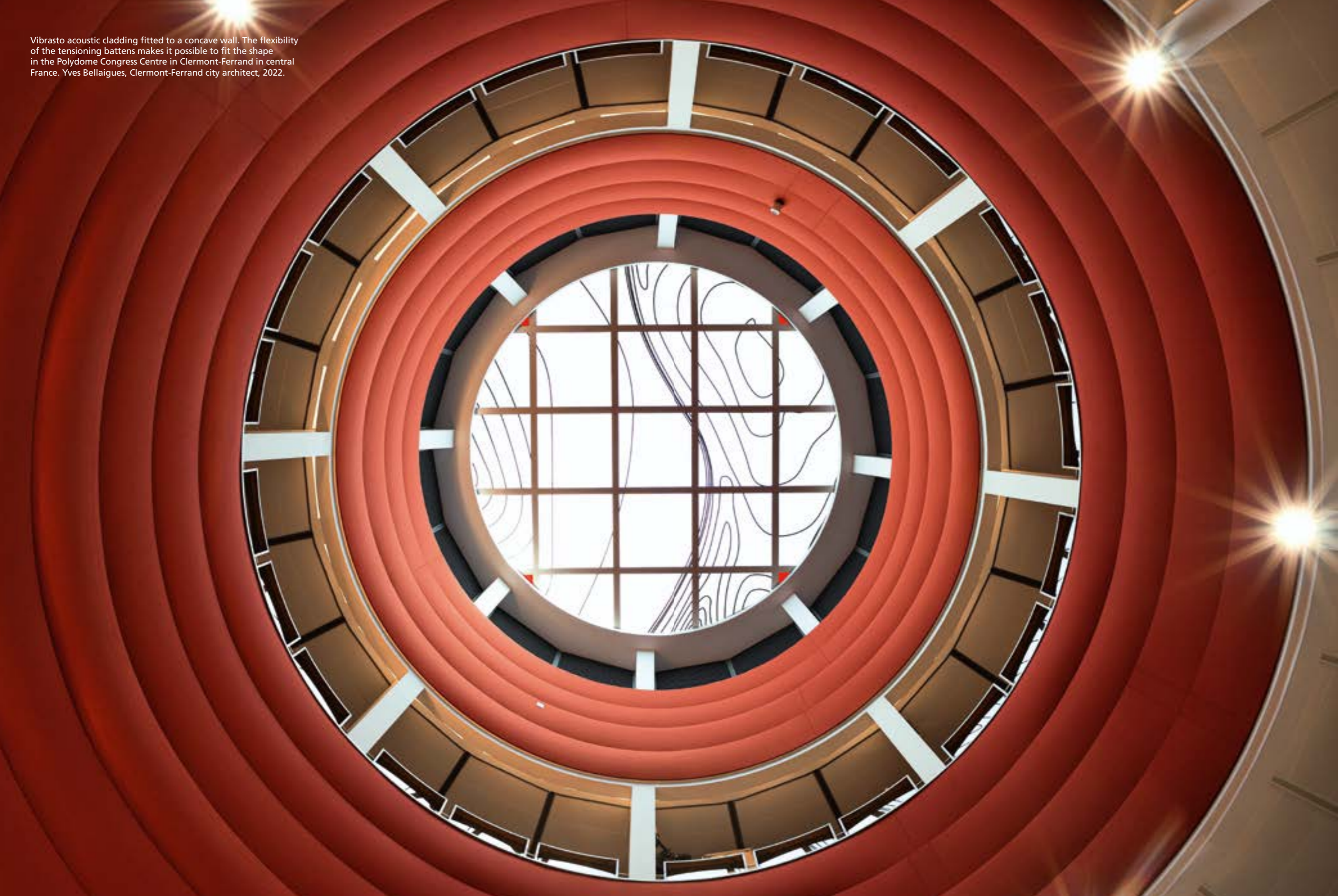


Vibrato on a curved wall in the Nuits-Saint-Georges Music Conservatory in eastern France. Architect: Hervé Regnault, 2022.





Vibrasto acoustic cladding fitted to a concave wall. The flexibility of the tensioning battens makes it possible to fit the shape in the Polydome Congress Centre in Clermont-Ferrand in central France. Yves Bellaigues, Clermont-Ferrand city architect, 2022.







Vibrasto acoustic cladding fitted to a wall in the Polydome Congress Centre in Clermont-Ferrand in central France. Yves Bellaigues, Clermont-Ferrand city architect, 2022.



Vibrasto acoustic cladding on the wall with recessed lighting in the CB21 Tower auditorium in Courbevoie, west of Paris. Bouchaud Architects, 2022.



Close-up of the layout pattern.





When it covers the whole ceiling, Vibrasto becomes almost invisible. The Ressources restaurant in Bordeaux, 2022.



Vibrasto acoustic cladding installed in an alcove. The flexibility of the tensioning battens makes it possible to fit the shape. The Chère Amie restaurant in Strasbourg. Design: Pascal Claude Drach, 2023.

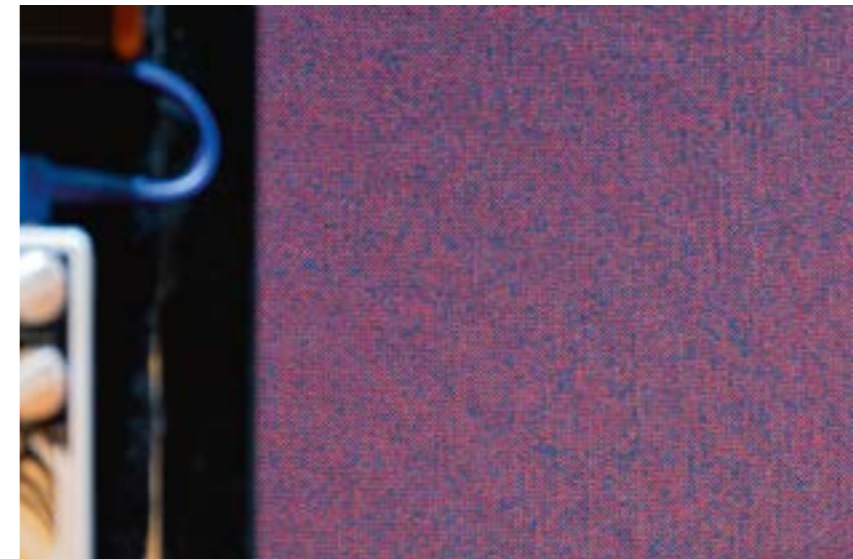




Vibrasto acoustic cladding on the wall with recessed lighting in the Arquebuse restaurant in Lyon in 2022. The choice of a heathered shade highlights the fabric's texture and contributes a feeling of softness to the area.



Vibrasto acoustic cladding on the wall of Bordeaux recording studio Universeul. A custom-made heather designed by Christian Malcurt was installed for recordings by the band Odezenne.



This custom-made heather was recreated from an old shade entitled "Pavage" that featured in a 1980's Texaa colour catalogue, using the yarns of our present palette.

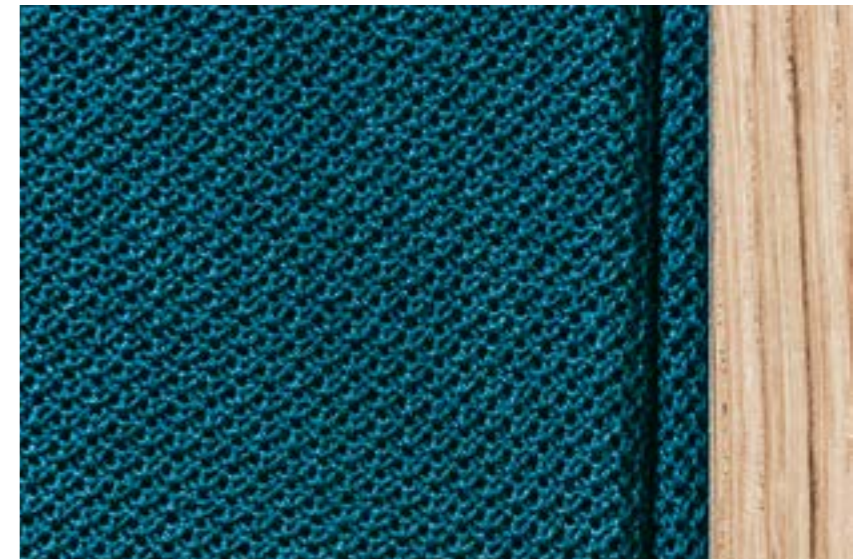




Vibrasto acoustic cladding applied to curved permanent fixtures in Cerfrance accountants' offices in Paris. Interior designer: Capucine Beauamps of Wrk, 2021.



Vibrasto acoustic cladding on partitions and seats of acoustic alcoves in an open plan area of mobile network operator Cosmote's head office in Athens, Greece. Architects: Katerina Karanikou and Giorgos Stamatakis of A-team MELETI LTD. Nikos Kontopoulos of Calma Acoustics, 2023.



Precise and thorough finish using pre-covered battens and a wooden frame.



# As fittable as ever

Vibrasto acoustic cladding, the legacy product of the Texaa range, is designed to be installed with almost invisible battens on flat or curved surfaces or fittings.

## HOW IT IS MADE



The facing of Vibrasto cladding is made of our Aeria fabric with perfectly opaque 3-mm-thick wadding that conceals the technical devices positioned behind it.



Installation battens are available ready-covered or not. They are made entirely from recycled materials while the sound-absorbing materials are 80% recycled.

### Short supply chains and maximum durability



Manufactured in France



Craftsmanship



Guaranteed 10 years

## HOW IT IS INSTALLED



The sound-absorbing material which gives Vibrasto its acoustic performance, is positioned between tensioning battens. Depending on the acoustic performance required and the space available, this material is either thin sound-absorbing felt or a thicker panel.



The cladding is fitted by simply pinching it in the battens with an upholsterer's knife. It is easy to achieve pencil line joints.



The Vibrasto installation system using profiled battens, enables cladding to be applied to very large areas with perfect joins.

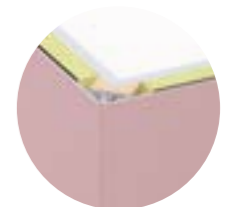
### A comprehensive installation system (here with Vibrasto 30)



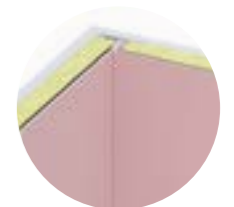
Non-covered batten for hidden edges



Covered batten for visible edges



Outside corner with wooden standoff batten



Inside corner



Join-to-join distance: 1,500 mm



## CLEANING AND REUSE



The Aeria fabric which covers Vibrasto cladding, is run-resistant and easily cleaned (see pages 18 to 25). Regular vacuum cleaning is enough for it to remain fresh and bright.



Eventually the fabric may need a deep clean or to be replaced. The acoustic components, however, can be reused without any loss in performance.



When it becomes time to change the product, all its components can be easily separated and either reconditioned or recycled.

### Finish options



Embroidered



Digitally printed



Grain de riz stitch.  
Colour: MGR580 (Moutarde)  
Subject to availability of stock

## CHARACTERISTICS

Updates and technical data sheets on [texaa.com](https://www.texaa.com)



### VIBRASTO 15



- Tensioning battens made from 100% recycled materials
- AF2 absorbent felt, 60% recycled
- Aeria sound-transparent fabric facing, laminated onto wadding



$\alpha_w = 0,35$  (H), NRC = 0,40  
class D (on concrete)



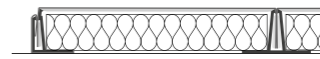
B-s2,d0  
complete product



40% recycled components

### VIBRASTO 30

- Tensioning battens made from 100% recycled materials
- A single 25-mm-thick RI sound-absorbing panel, 80% recycled materials
- Aeria sound-transparent fabric facing, laminated onto wadding



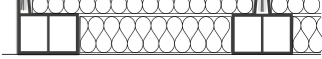
$\alpha_w = 0,75$  (H), NRC = 0,80  
class C (on plasterboard)  
 $\alpha_w = 0,50$  (MH), NRC = 0,70  
class D (on concrete)

B-s1,d0 (facing)  
A2-s1,d0 (RI panel)

66% recycled components

### VIBRASTO 55

- Tensioning battens made from 100% recycled materials
- Two thicknesses of 25-mm-thick RI sound-absorbing panel, 80% recycled materials
- Aeria sound-transparent fabric facing, laminated onto wadding



$\alpha_w = 0,95$ , NRC = 0,90  
class A (on concrete)

B-s1,d0 (facing)  
A2-s1,d0 (RI panel)

73% recycled components



Run-resistant knit, 330 g/m<sup>2</sup>  
and antistatic



Very low impact on climate.  
See French Environmental and Health  
Product Declarations (FDES) on [texaa.com](https://www.texaa.com)



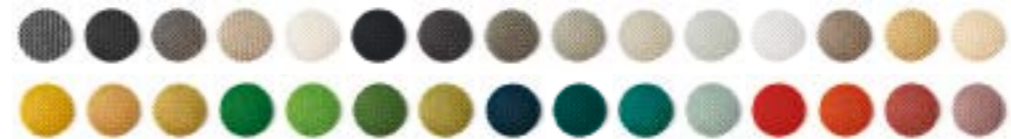
HQE, LEED  
and BREEAM (4 points)



End of life: can be dismantled.  
Components are separable and recyclable.



French "A+" interior air quality  
AgBB compliant



Select from the 30 colours in the Aeria palette on pages 28 & 29. Special colours available on request.



# Aeria colour palette

Special colours are available on request

Main range of 30 colours with the “Maille Ronde” stitch



Chiné graphique MR140



Chiné noir MR150



Chiné brun MR120



Chiné naturel MR130



Craie MR630



Graphite MR520



Granit MR980



Gris pierre MR350



Quartz MR300



Ciment MR700



Silix MR950



Nacre MR640



Taupe MR680



Beige MR930



Ivoire MR940



Moutarde MR580



Cumin MR920



Vert beige MR670



Fougère MR650



Prairie MR480



Vert cactus MR550



Lichen MR660



Bleu nocturne MR310



Océan MR340



Bleu étang MR360



Bleu menthe MR370



Rouge MR470



Brique MR620



Rose rubis MR320



Vieux rose MR330

“Grande Maille” used with Stereo Air open mesh panels



Nacre GMR640



Granit GMR980



The final appearance of any colour of our Aeria fabric is partially influenced by the base to which it is applied. The presentations above display Stereo, Kora and Vibrasto applications: light colours are applied to a grey base and dark colours are mounted on black bases. Also objects always have light-coloured base materials. Curtains and blinds always have black bases. If you are mixing product families, please contact us.

“Maille Ronde Élargie” used for Velio drapes



Nacre MRE640



Granit MRE980



Taupe MRE680



# Texaa®

Conceive and build your  
solutions with [texaa.com](https://texaa.com)



Texaa has been officially recognised in France as a 'Living Heritage Company', a distinction that highlights the excellence of French craftsmanship and industrial processes.

## **UNITED KINGDOM**

Becket House  
1 Lambeth Palace Road  
London SE1 7EU  
+44 (0) 20 7092 3435  
[contact@texaa.co.uk](mailto:contact@texaa.co.uk)  
[www.texaa.co.uk](https://www.texaa.co.uk)

## **FRANCE**

43, allée Mégevie  
33174 Gradignan  
+33 (0) 5 56 75 71 56  
[contact@texaa.fr](mailto:contact@texaa.fr)  
[www.texaa.fr](https://www.texaa.fr)

## **DEUTSCHLAND**

Walter-Kolb-Straße 9-11  
60594 Frankfurt am Main  
+49 (0) 69 962 17 63 16  
[kontakt@texaa.de](mailto:kontakt@texaa.de)  
[www.texaa.de](https://www.texaa.de)