

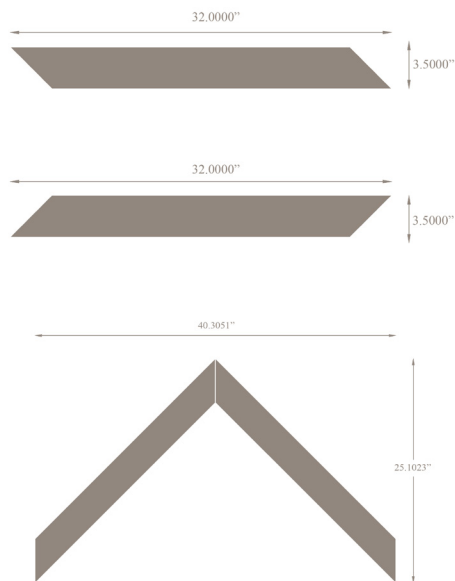
# windsor stitch

WINDSOR COLLECTION FOR FLOORS, WALLS & CEILINGS

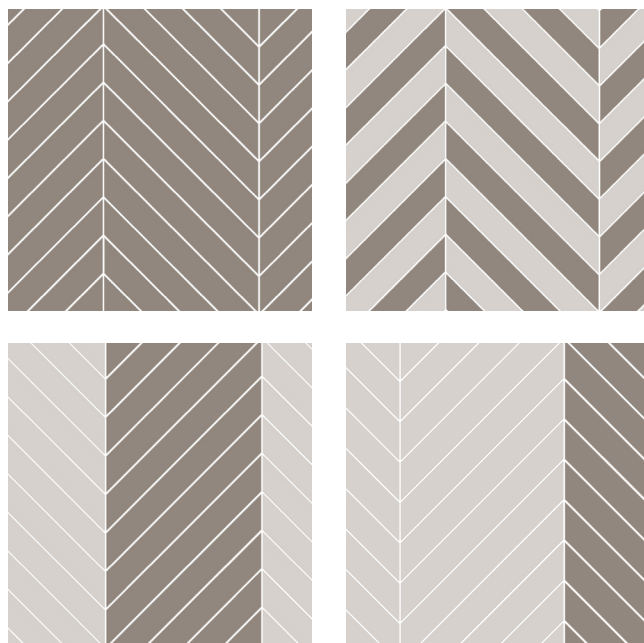


JAMIE BECKWITH®  
COLLECTION

## 1. PATTERN & REPEAT



## 2. LAYOUT SUGGESTIONS



## SPECIFICATIONS

### WOOD TILE CONSTRUCTION:

Engineered wood.  
4mm wear layer over 9 ply substrate.

### THICKNESS:

5/8 inches.

### REPEAT:

2 Planks: 1.27 SF  
1 Right & 1 Left

### BOX QUANTITY:

22.86 SF per box.  
32 planks total per box/ 18 repeats.

### COVERAGE PER TILE:

.635 SF

### INSTALLATION:

Glue down. (See installation guidelines)  
Wood tiles are NOT provided on a mesh or panel backing.

### USAGE:

Warranted for Commercial or Residential floors, walls & ceilings.  
Not suitable for areas exposed to running water: inside showers, etc.  
Not suitable for outdoor applications.

### LEADTIME:

6-8 weeks for production.  
Expedited options available upon request for an upcharge.

### PRICING:

Varies by pattern & wood species.  
Multiple stain selections do not affect pricing.

### FIRE RATING:

Class C. (Class B available upon request)

### STAINING SYSTEM:

Rubio Monocoat hard oil finish - no VOC.  
Available unfinished.

### LEED CREDITS:

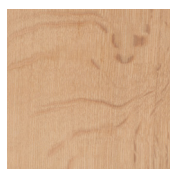
2009 NC/CI MR Credit 5 - Regional Materials  
2009 NC/CI IEQ Credit 4.1-4.4 - Low Emitting Finish

\*\*\*This product may contribute to the achievement of LEED credits, although JBC makes no guarantees of representation of such.

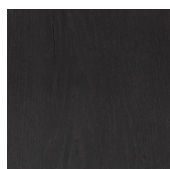
### CAD PATTERNS AVAILABLE UPON REQUEST.

Contact your local JBC representative.

## 3. SPECIES



Quarter White Oak



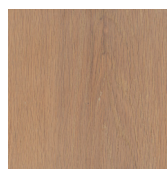
Noir



Noisette



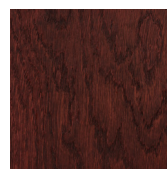
Blanc



Dore



Gris



Rouge

## 4. STAINS

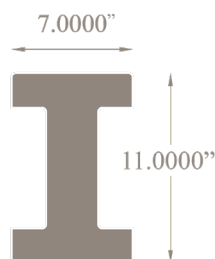
# hot to trot

WINDSOR COLLECTION FOR FLOORS, WALLS & CEILINGS

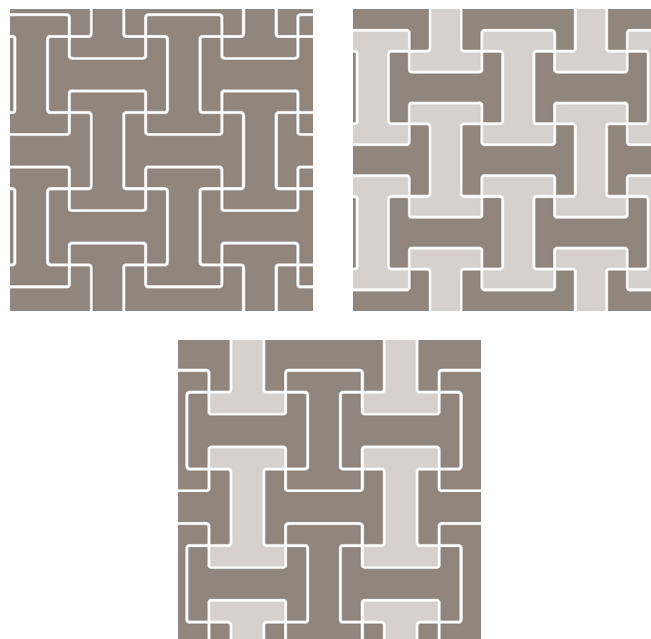


JAMIE BECKWITH®  
COLLECTION

## 1. PATTERN



## 2. LAYOUT SUGGESTIONS



## SPECIFICATIONS

### WOOD TILE CONSTRUCTION:

Engineered wood.  
4mm wear layer over 9 ply substrate.

### THICKNESS:

5/8 inches.

### REPEAT:

N/A

### BOX QUANTITY:

21.76 SF per box.  
64 tiles total per box.

### COVERAGE PER TILE:

.34 SF

### INSTALLATION:

Glue down. (See installation guidelines)  
Wood tiles are NOT provided on a mesh or panel backing.

### USAGE:

Warranted for Commercial or Residential floors, walls & ceilings.  
Not suitable for areas exposed to running water: inside showers, etc.  
Not suitable for outdoor applications.

### LEADTIME:

6-8 weeks for production.  
Expedited options available upon request for an upcharge.

### PRICING:

Varies by pattern & wood species.  
Multiple stain selections do not affect pricing.

### FIRE RATING:

Class C. (Class B available upon request)

### STAINING SYSTEM:

Rubio Monocoat hard oil finish - no VOC.  
Available unfinished.

### LEED CREDITS:

2009 NC/CI MR Credit 5 - Regional Materials  
2009 NC/CI IEQ Credit 4.1-4.4 - Low Emitting Finish

\*\*\*This product may contribute to the achievement of LEED credits, although JBC makes no guarantees of representation of such.

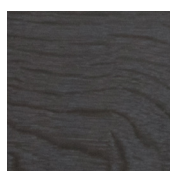
### CAD PATTERNS AVAILABLE UPON REQUEST.

Contact your local JBC representative.

## 3. SPECIES



Quarter White Oak



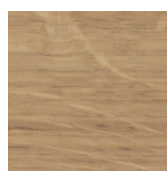
Noir



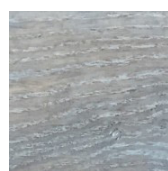
Noisette



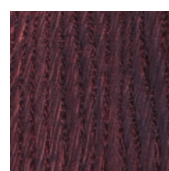
Blanc



Dore



Gris



Rouge

## 4. STAINS

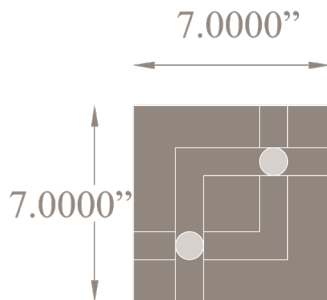
# nailed it

WINDSOR COLLECTION FOR WALLS & CEILINGS

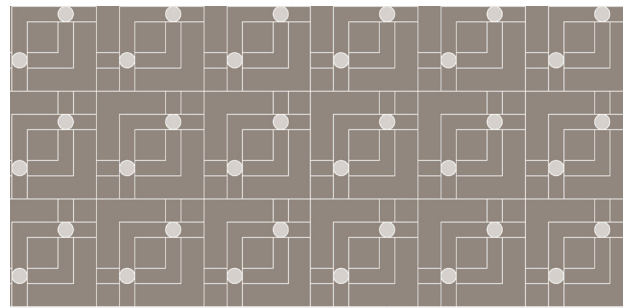
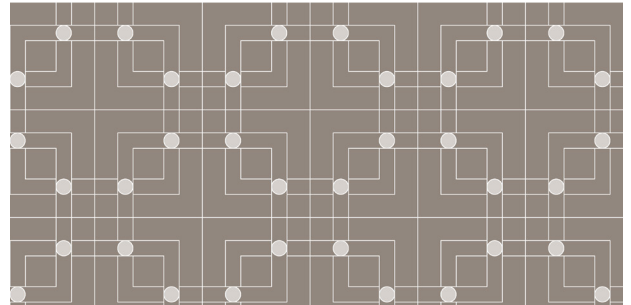


JAMIE BECKWITH®  
COLLECTION

## 1. PATTERN



## 2. LAYOUT SUGGESTIONS



## SPECIFICATIONS

### WOOD TILE CONSTRUCTION:

Engineered wood.  
4mm wear layer over 9 ply substrate.

### THICKNESS:

5/8 inches.

### REPEAT:

N/A

### BOX QUANTITY:

20.4 SF per box.  
60 tiles total per box.

### COVERAGE PER TILE:

.34 SF per tile.

### NAILHEADS:

Designer specifies finish. 4 options.

### INSTALLATION:

Glue down. (See installation guidelines)  
Wood tiles are NOT provided on a mesh or panel backing.

### USAGE:

Warranted for Commercial or Residential walls & ceilings.  
Not suitable for areas exposed to running water: inside showers, etc.  
Not suitable for outdoor applications.  
Not suitable for flooring.

### LEADTIME:

6-8 weeks for production.  
Expedited options available upon request for an upcharge.

### PRICING:

Varies by pattern & wood species.  
Multiple stain selections do not affect pricing.

### FIRE RATING:

Class C. (Class B available upon request)

### STAINING SYSTEM:

Rubio Monocoat hard oil finish - no VOC.  
Available unfinished.

### LEED CREDITS:

2009 NC/CI MR Credit 5 - Regional Materials  
2009 NC/CI IEQ Credit 4.1-4.4 - Low Emitting Finish

\*\*\*This product may contribute to the achievement of LEED credits, although JBC makes no guarantees of representation of such.

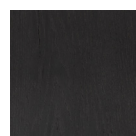
### CAD PATTERNS AVAILABLE UPON REQUEST.

Contact your local JBC representative.

## 3. SPECIES



Quarter White Oak



Noir



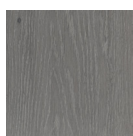
Noisette



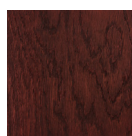
Blanc



Dore



Gris



Rouge

## 4. STAINS

## 5. NAILHEADS



Matte Gold



Nickel



Bronze



Smoke

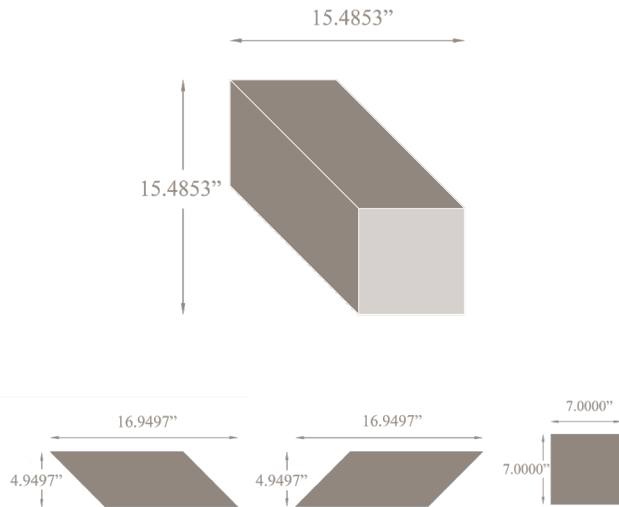
# color blocked

WINDSOR COLLECTION FOR FLOORS, WALLS & CEILINGS

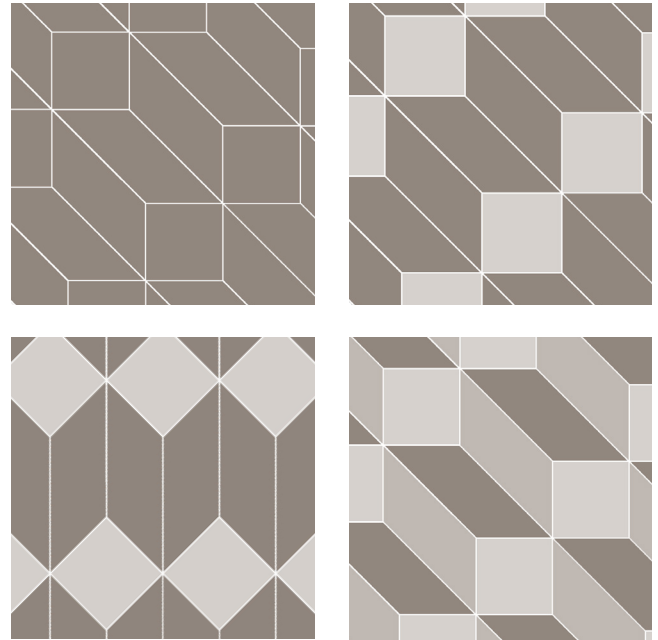


JAMIE BECKWITH®  
COLLECTION

## 1. PATTERN



## 2. LAYOUT SUGGESTIONS



## SPECIFICATIONS

### WOOD TILE CONSTRUCTION:

Engineered wood.  
4mm wear layer over 9 ply substrate.

### THICKNESS:

5/8 inches.

### REPEAT:

3 Tiles: 1.17 SF  
1 Right, 1 Left & 1 Square

### BOX QUANTITY:

21.06 SF per box.  
54 tiles total per box/ 18 repeats.

### COVERAGE PER TILE:

Varies

### INSTALLATION:

Glue down. (See installation guidelines)  
Wood tiles are NOT provided on a mesh or panel backing.

### USAGE:

Warranted for Commercial or Residential floors, walls & ceilings.  
Not suitable for areas exposed to running water: inside showers, etc.  
Not suitable for outdoor applications.

### LEADTIME:

6-8 weeks for production.  
Expedited options available upon request for an upcharge.

### PRICING:

Varies by pattern & wood species.  
Multiple stain selections do not affect pricing.

### FIRE RATING:

Class C. (Class B available upon request)

### STAINING SYSTEM:

Rubio Monocoat hard oil finish - no VOC.  
Available unfinished.

### LEED CREDITS:

2009 NC/CI MR Credit 5 - Regional Materials  
2009 NC/CI IEQ Credit 4.1-4.4 - Low Emitting Finish

\*\*\*This product may contribute to the achievement of LEED credits, although JBC makes no guarantees of representation of such.

### CAD PATTERNS AVAILABLE UPON REQUEST.

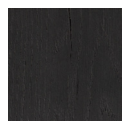
Contact your local JBC representative.

## 3. SPECIES

## 4. STAINS



Quarter White Oak



Noir



Noisette



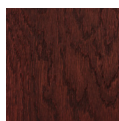
Blanc



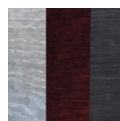
Dore



Gris



Rouge



Rouge Palette



Gris Palette



Cendre Palette

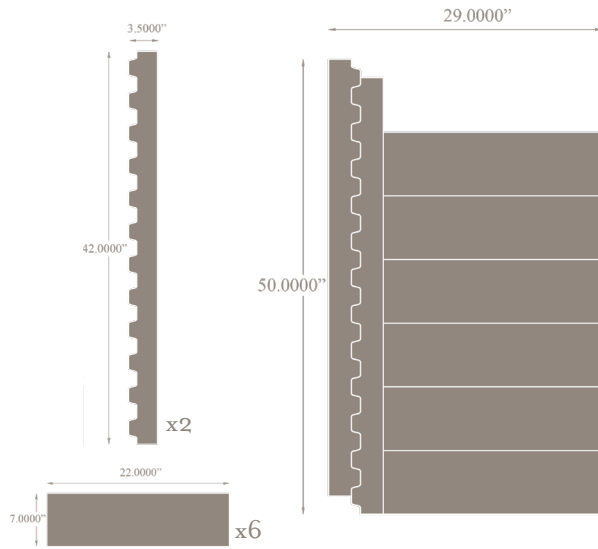
# zip it

WINDSOR COLLECTION FOR FLOORS, WALLS & CEILINGS

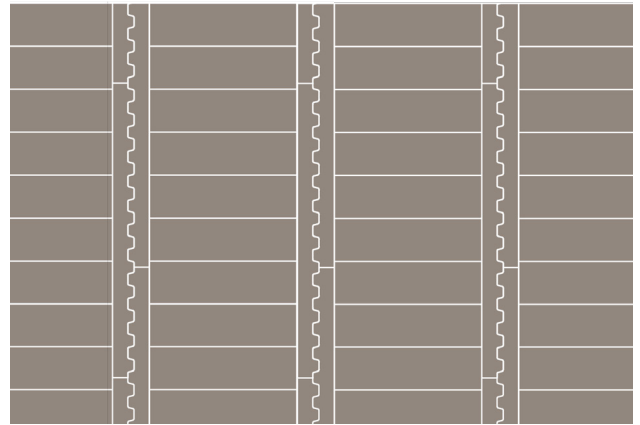


JAMIE BECKWITH®  
COLLECTION

## 1. PATTERN & REPEAT



## 2. LAYOUT SUGGESTIONS



## SPECIFICATIONS

### WOOD TILE CONSTRUCTION:

Engineered wood.  
4mm wear layer over 9 ply substrate.

### THICKNESS:

5/8 inches.

### REPEAT:

8 Tiles: 8.164 SF  
2 Zippers & 6 boards.

### BOX QUANTITY:

24.492 SF per box.  
24 tiles total per box/ 3 repeats.

### COVERAGE PER TILE:

Varies

### INSTALLATION:

Glue down. (See installation guidelines)  
Wood tiles are NOT provided on a mesh or panel backing.

### USAGE:

Warranted for Commercial or Residential floors, walls & ceilings.  
Not suitable for areas exposed to running water: inside showers, etc.  
Not suitable for outdoor applications.

### LEADTIME:

6-8 weeks for production.  
Expedited options available upon request for an upcharge.

### PRICING:

Varies by pattern & wood species.  
Multiple stain selections do not affect pricing.

### FIRE RATING:

Class C. (Class B available upon request)

### STAINING SYSTEM:

Rubio Monocoat hard oil finish - no VOC.  
Available unfinished.

### LEED CREDITS:

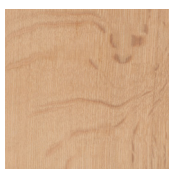
2009 NC/CI MR Credit 5 - Regional Materials  
2009 NC/CI IEQ Credit 4.1-4.4 - Low Emitting Finish

\*\*\*This product may contribute to the achievement of LEED credits, although JBC makes no guarantees of representation of such.

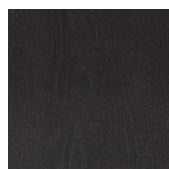
### CAD PATTERNS AVAILABLE UPON REQUEST.

Contact your local JBC representative.

## 3. SPECIES



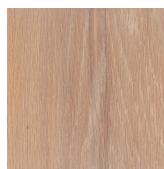
Quarter White Oak



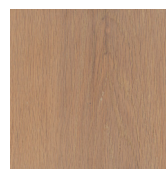
Noir



Noisette



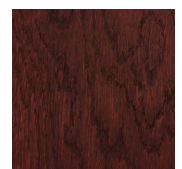
Blanc



Dore



Gris



Rouge

## 4. STAINS