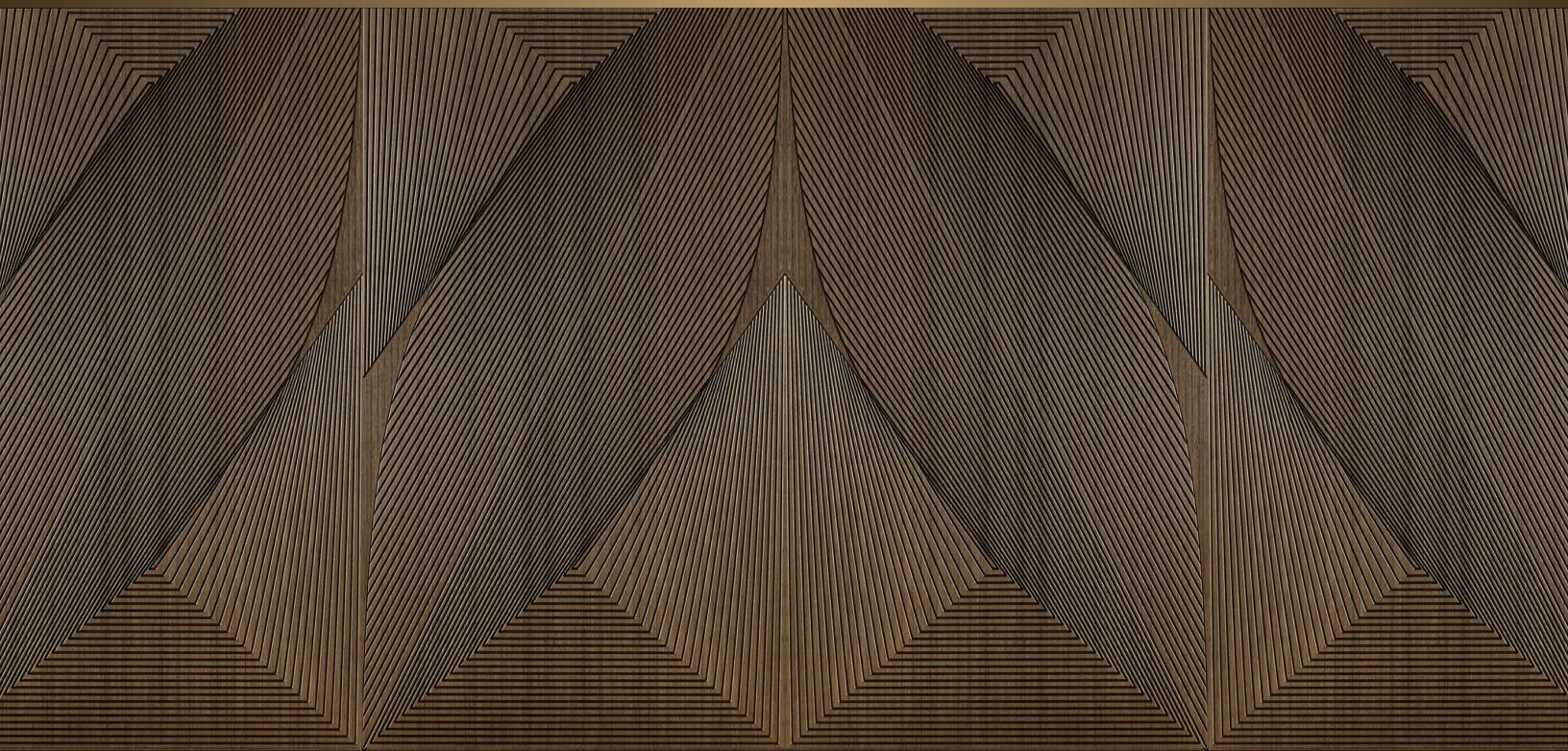




PLEAT&WEAVE™

The Interplay of Line and Grain



Designed by Kelsey Ann Kasom — Smith & Fong Company, Plyboo



PLEAT&WEAVE™

The Interplay of Line and Grain

Fashion designer and sculptural textile artist **Kelsey Ann Kasom** explores the relationship between the body and its surrounding environments, grounded in an understanding of the material's innate potential. Her design philosophy is shaped by the interplay of **Pleat&Weave™** – an exploration that defines the possibilities within natural materials. Pleat reflects rhythm and repetition, while weave captures structure through the grain, creating a dynamic flow that transforms spaces.





In Kelsey's work with bamboo, the natural grain aligns with the weave of the fabric, both shaped by a shared rhythm of repeating lines. The interaction of shadow and reflective light on **Plyboo's RealCore®** bamboo enhances depth and dimension, much like how light moves across fabric. This connection reveals the truth that when guided by nature, both bamboo and fabric elevate the material by design to its highest potential.

— Kelsey Ann Kasom, Materials Designer for Plyboo by Smith & Fong Company





PW33 Fog



PW33 Mist



PW33 Espresso



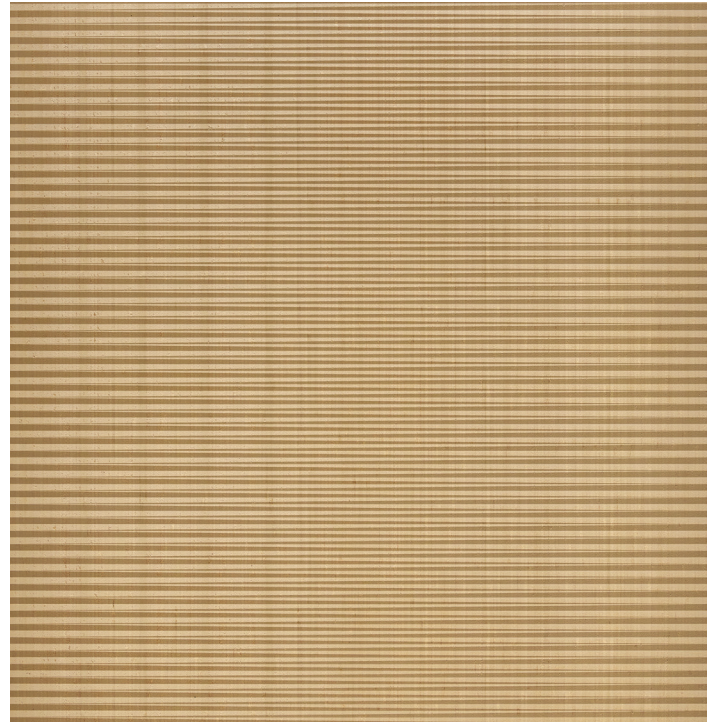
PW33 Beige



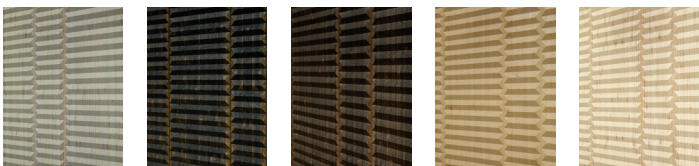
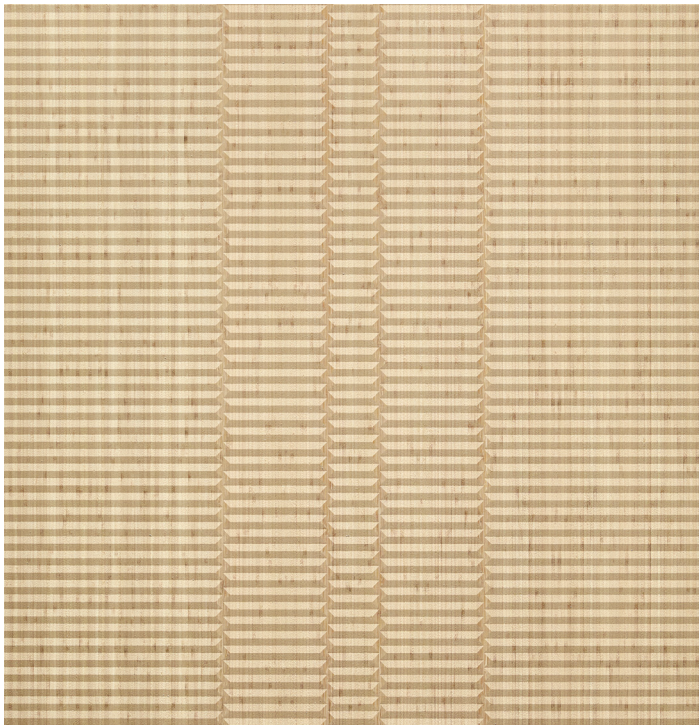
PW33 Crema



PW12_25 Fog PW12_25 Noir PW12_25 Espresso PW12_25 Beige PW12_25 Crema



PW21 Fog PW21 Noir PW21 Espresso PW21 Beige PW21 Crema



PW4 Fog PW4 Noir PW4 Espresso PW4 Beige PW4 Crema

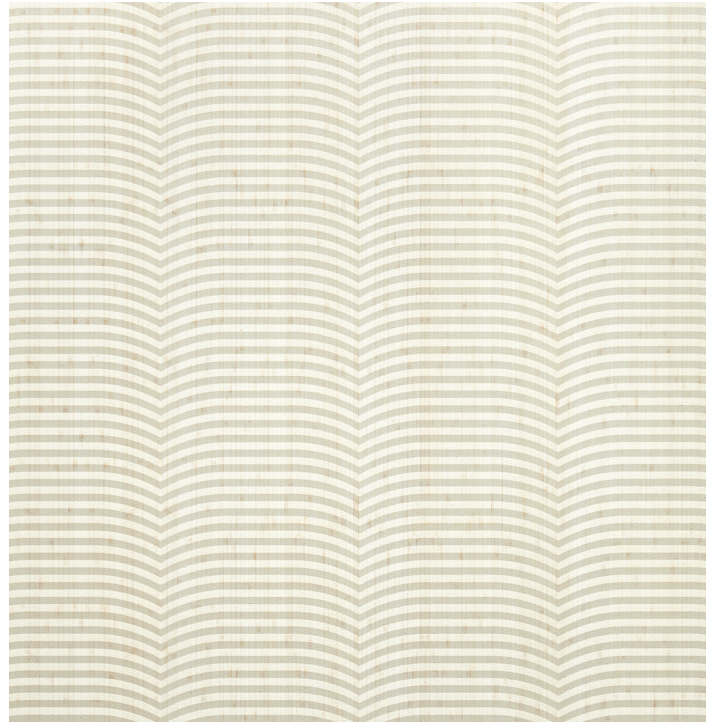


PW28 Fog PW28 French Noir PW28 Espresso PW28 Beige PW28 Crema

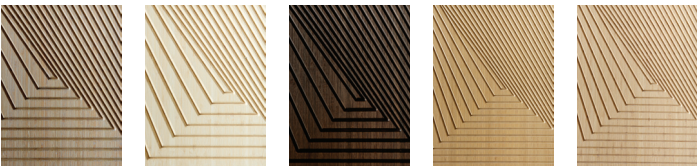
PLEAT&WEAVE™ The Interplay of Line and Grain



PW30_100 Fog PW30_100 Noir PW30_100 Espresso PW30_100 Beige PW30_100 Crema



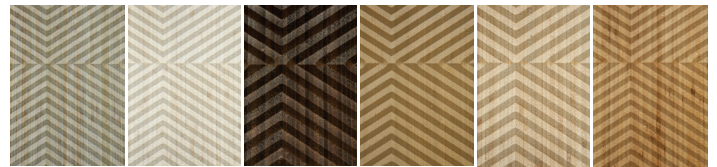
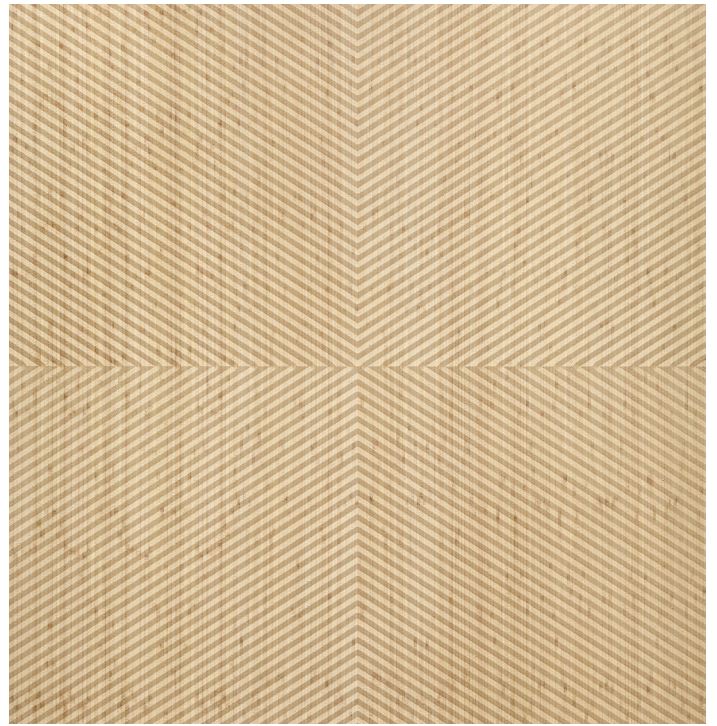
PW26C Fog PW26C Mist PW26C Espresso PW26C Beige PW26C Crema



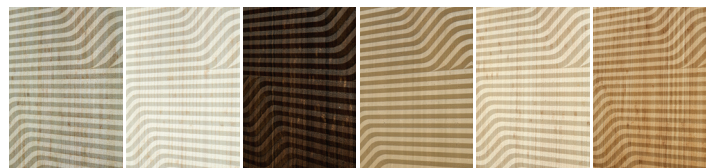
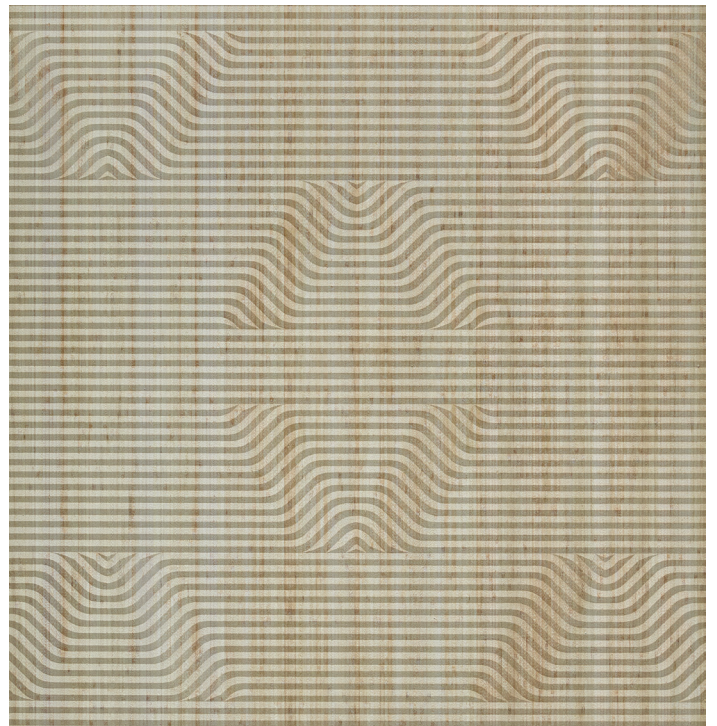
PW31M Fog PW31M Mist PW31M Espresso PW31M Beige PW31M Crema



PW31M Fog PW31M Mist PW31M Espresso PW31M Beige PW31M Crema



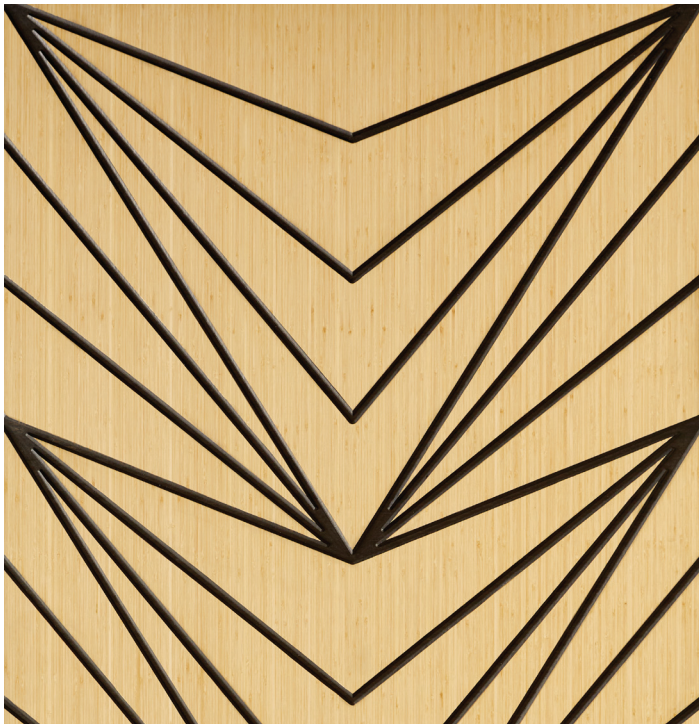
PW34 Fog PW34 Mist PW34 Espresso PW34 Beige PW34 Crema PW34 Amber



PW35 Fog PW35 Mist PW35 Espresso PW35 Beige PW35 Crema PW35 Amber



PW12_100 Fog PW12_100 Noir PW12_100 Espresso PW12_100 Beige PW12_100 Crema



PW2 Fog

PW2 French Noir

PW2 Espresso

PW2 Beige

PW2 Crema



PW30_25 Fog

PW30_25 Noir

PW30_25 Espresso

PW30_25 Beige

PW30_25 Crema



PW2A Fog

PW2A French Noir

PW2A Espresso

PW2A Beige

PW2A Crema









PLEAT&WEAVE™

The Interplay of Line and Grain

COLLECTION	Pleat&Weave™
MATERIAL	100% Bamboo (FSC Certified)
BASE/CORE COMPOSITION	Species: Moso bamboo (<i>Phyllostachys Pubescens</i>), RealCore™ Technology
ENVIRONMENTAL	LEED Credit Contributing, EPD, HPD, LCA, FSC
DIMENSIONS	¾" x 47 ¾" x 95 ¾" (19mm x 1213mm x 2432mm)
WEIGHT	80-90 lbs
SURFACE TEXTURE	Smooth or Carved
EDGE PROFILE	Straight Edge
COLLECTION COLORS	Amber, Beige, Crema, Espresso, Fog, French Noir, Mist, Noir, or custom by design
EMISSIONS TESTING	Section 01350 Protocol: No VOC's with chronic REL's (reference exposure level) detected, passes office, school and residential.
FLAME SPREAD	ASTM E84; Class C (Class B available)
PRODUCT DESIGN	Pleat&Weave™ Designed by Kelsey Ann Kasom , Manufactured by Smith & Fong Company

SMITH & FONG COMPANY

394 Bel Marin Keys Blvd. #6 | Novato, CA 94949
415-896-0577 | info@plyboo.com | www.plyboo.com