



---

[MetWest.com](http://MetWest.com)

# ABOUT METROPOLITAN WEST

---

Metropolitan West is a full-service company, combining top of the line window films with expert installation and creative solutions for businesses.

Metropolitan West is a nationally recognized and award-winning full-service window film and wall graphics company. For over 25 years we've been creating beautiful office environments for clients that include Fortune 500 companies, combining quality products with innovative solutions for even the most complex projects.

Since 1992, we have worked and consulted with the nation's leading architects, interior designers, general contractors, and property managers to create breathtaking spaces, solving energy concerns through our innovative and professional services for all wall covering and window film needs.



## Our Vision:

**To bring beauty & functionality to environments through technology and design**

# THE METWEST ADVANTAGE

---



Some companies only do one thing right. That's not Metropolitan West. Our in-house experts excel in project management, graphic design, digital rendering, printing, installation and more.

We can take your project from inception to completion, starting with your design or idea. Local crews take precise measurements in the fields.

Back at the office, our design team renders the graphics to fit your space. We'll send an elevation showing the finished look of the proposed design and a sample of the material.

After printing and quality checks, the film will be sent to your location or installed by our local installation team. With our full-service capabilities, we are the single source for your surface film needs.

***“In a nutshell, we do not require babysitting or micromanaging. What we do is get the job done professionally and affordably.”***

***- Kelly Taylor, CEO***



# METWEST SERVICES

# CUSTOM DESIGN

---



**Our designers can work with you to create custom-printed films for your Glass, Walls, Floors, Ceilings & Doors.**

We can incorporate any design to seamlessly match your requirements and the decor of your space from branding, to texture and pattern, to color and level of transparency.

# CUSTOM DESIGN



## Color Matching

We can match any Pantone or paint color to meet your design needs.



## Getting Artwork Production Ready

If your artwork is mostly finished, but terms like “bleed” and “DPI” make your head spin, don’t worry. We’ll take a look at what you have and help make your design production ready.



## Samples That Go Above and Beyond

For samples, we apply film to a 12"x12" piece of glass, so that you can get the full effect. Wall covering projects get a 48"x24" sample print so you can ensure it's the quality and color you need.

# CUSTOM DESIGN

Sometimes standard just doesn't cut it. You (or your client) know exactly what you want, and you shouldn't settle for less. Choosing custom ensures you receive your perfect solution.



## Benefits of Custom Design

1

### *Stunning Art*

Your idea is turned into a larger than life decorative work of art

2

### *Personalized Branding*

With custom, it's easy to incorporate your logo, messaging or other branding elements

3

### *Professional Support*

An in-house team of professional designers assists you every step of the way

4

### *Match Existing Interior*

Color and pattern matching makes it easy to match or contrast existing design elements.

5

### *Fit Your Space*

Standard sizes rarely match client needs exactly. Custom printing means you get the exact size for your space

# CUSTOM WALL COVERING



## Any Color. Any Image. Any Size.

Goodbye paint. I'd like to say we miss you, but wall coverings are definitely more our style. A carefully chosen graphic becomes a stunning statement. Our team can assist with color matching and custom design to help you create your experiential graphic solution.





# CUSTOM PEERHATCH

## What is peerhatch?

peerhatch is a non-ghosting dry erase wall covering. It's an alternative to whiteboards and dry erase paints which can be easily customized with any image.

## Non-Ghosting

No more smudges or impossible to get rid of dry erase. Leave writing up for months and it will still wipe clean.

## Customizable

With our patented infused graphic printing process, we can print any image, color or branding.

## Magnetic or Non-Magnetic

Choose custom peerhatch magnetic for all the non-ghosting dry erase capabilities of our original product, with the additional quality of being magnetic.



# CUSTOM DESIGN (PRINT OR CUT)



## Transform Your Glass

### *Stunning Final Look*

Turn your standard office windows and glass walls into exciting works of art.

### *Added Privacy*

Glass offices lack privacy, which makes employees uncomfortable and can even create security risks.

### *Affordable*

Installing or replacing decorative film is far more cost-effective than replacing glass.

# CUSTOM GRADIENTS

## Standard v. Custom Gradients

Off-the-shelf gradients are restricted in size and design – usually a 60" height vertical gradient from white to clear.

Custom gradients are easily customized to fit your needs. Any size, direction, color, pattern or density

## Why Choose Custom?

**Any Height:** Print to full height of glass for a seamless finish

**Any Pattern:** From half tone, squares, stripes, to your logo

**Any Density:** Very opaque, or transparent, to fit your privacy needs

**Any Color:** Transition between one or more colors



# CUSTOM DISTRACTION MARKERS

## Protect Your Company, Staff & Visitors

Glass walls in an office space can create a beautiful interior, but it's also an accident waiting to happen. In the age of smartphones, injuries from accidentally colliding with a glass wall are especially common. Distraction markers are an easy solution to prevent these injuries.



## Why Choose Distraction Markers?

1

### *Safety*

Protected distracted employees and visitors and help prevent potentially serious injuries

2

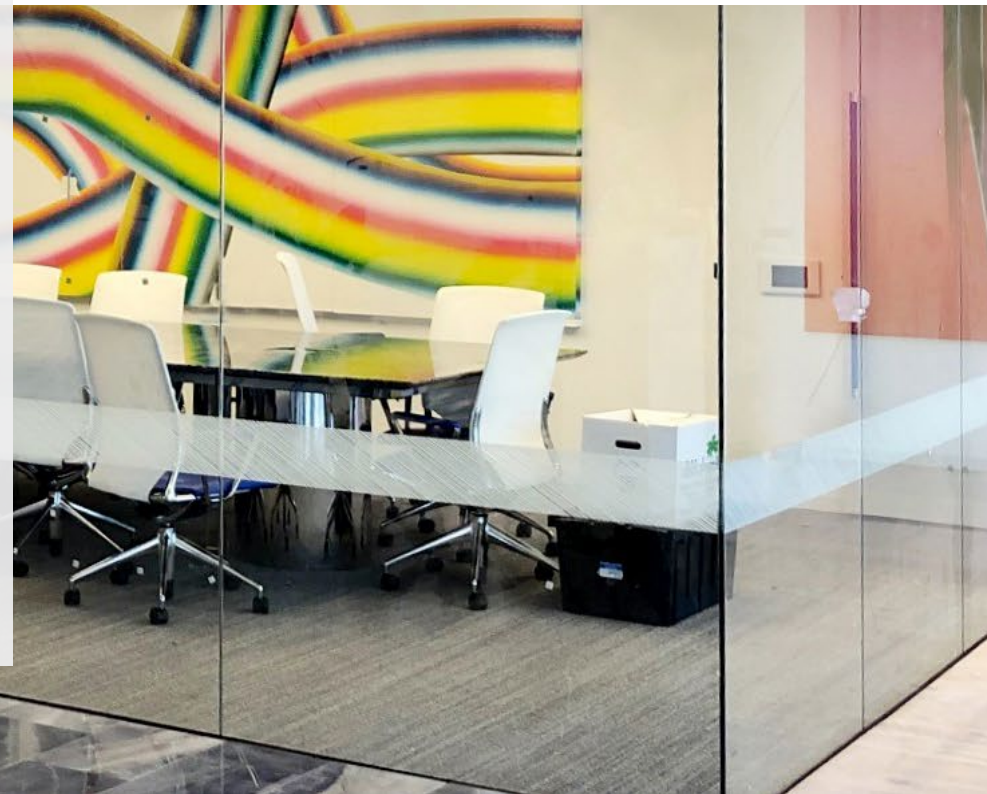
### *Branding*

Incorporate your logo or company colors to brand your office space

3

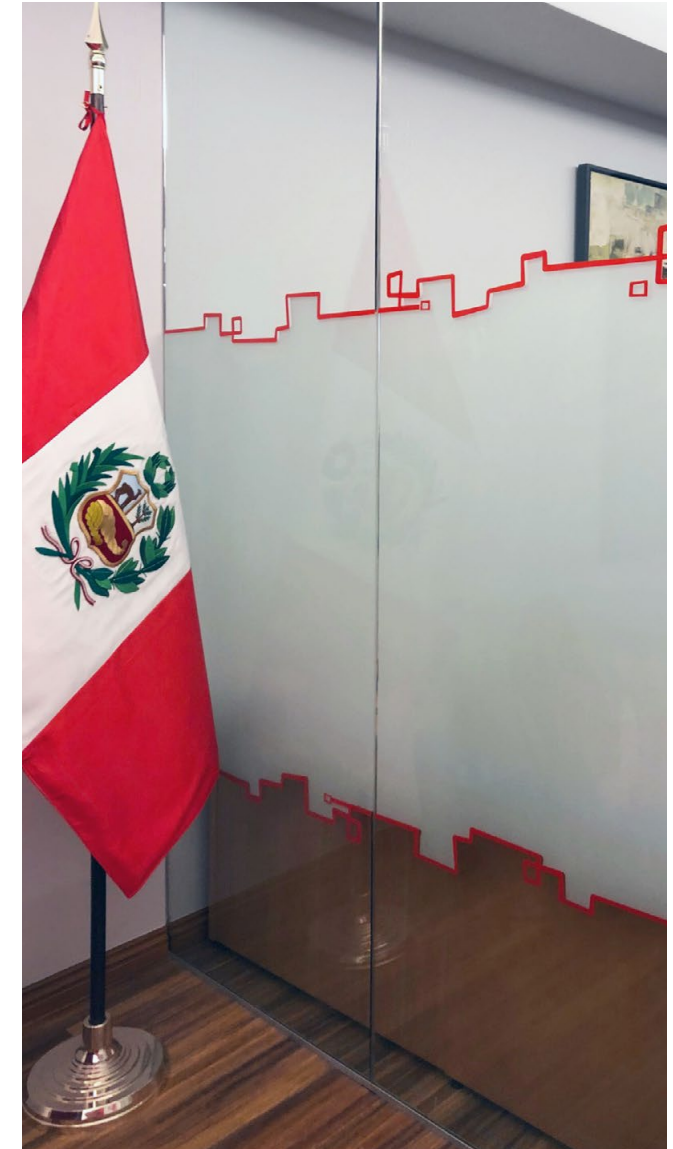
### *Decorative*

From an etched glass effect, to custom solutions, the right distraction markers look beautiful



# CUSTOM BANDS

---



## As Much Or As Little Privacy As You Need

Add decoration and semi-privacy to your office, conference room, or anywhere else you need extra privacy, while maintaining openness. Customize with your branding, original art or pattern, using any color or design.

# DECORATIVE STANDARD FROST

## Privacy and Style for Affordable Prices

Featuring an inspiring array of decorative glass films to match or accentuate your space. Choose from our selection of frosted films for privacy, or accentuate your space with one of our collection of classic and modern patterns – including geometric, botanical, and textural designs.



# DECORATIVE STANDARD FROST



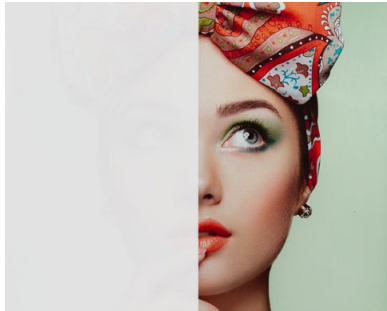
Dusted Crystal



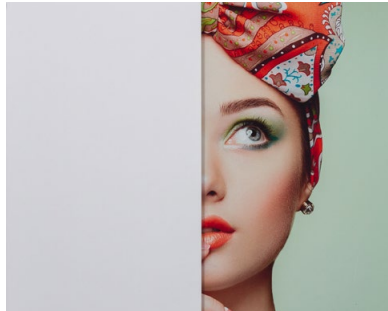
Metro Frost



Metro Light



Matted Metro Frost



Blanca



Brushed



Clear Sandblast



Sheer



Frosted 50/50



Frosted Linear



Frosted Ribbon



Capricious



Contingent



Contrary



Frozen Water

# DECORATIVE STANDARD FROST



Glacier



Inverse



Meandering



Ocean



Opposed



Peaceful Waves



Restless



Rings



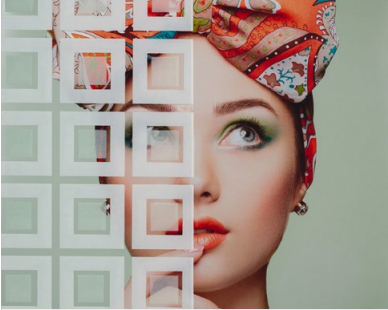
Squares



Strand



Stroke



Troika



Twine



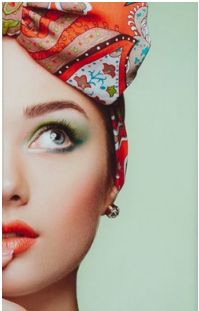
Weave



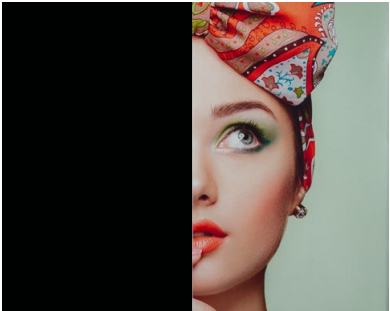
Weft



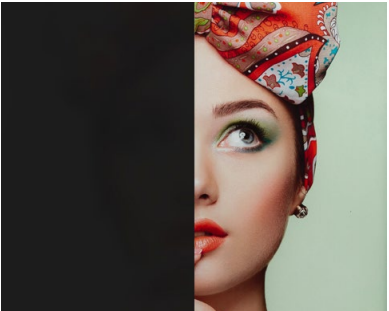
# DECORATIVE STANDARD FROST



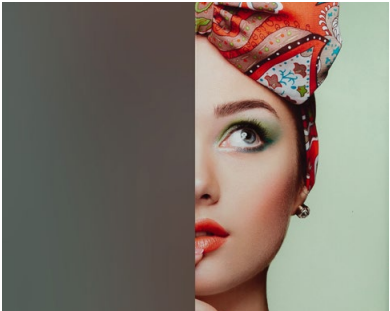
Repositional White Tsuedo



Repositional Black Tsuedo



Chalkboard



MW Rear Projection



Perforato

View high resolution photos of all our decorative films on our Decorative Glass Film Webpage: [metwest.com/decorative-glass-film-window](http://metwest.com/decorative-glass-film-window)



# SAFETY FILM

## Protect Your Property

We provide a wide array of film options for retrofit as well as other construction projects. Moreover, to complement the advantages of safety and security film, MetWest has almost two decades of installation experience.

## Benefits

- Reduces flying glass shards
- Costs up to 70% less than tempered glass
- Nearly invisible to the eye
- First defense against rocks, bricks and other projectiles
- Reduce fading of carpets and furnishings



**3M**  
Platinum  
Dealer

# ANTI-GRAFFITI FILM



## Guard Against Vandalism

Whether applied to windows, transit stops, public transportation or even bathroom mirrors and stalls, anti-graffiti window film provides a strong first line of defense against vandalism. It's easy to apply, cost effective, and easy to remove after vandalism.

## Benefits

- Protects against paint, gouging, scratching and even acid etching
- Nearly invisible to the eye
- Replace at a fraction of the cost of new glass
- Quick turnaround time – keep your building graffiti free longer



# SOLAR & SOLAR PRESTIGE

---

## Protect Your Company, Staff & Visitors

MetWest is a 3M Authorized Platinum Dealer of commercial window film, providing clients with the highest quality solar control films along with top customer service and expert installation. Our large variety of film includes color, tint, and transparency options to meet your design needs.

## Benefits of Solar Film

1

### *Reduce Heat*

Reject the sun's heat and keep your building cool and pleasant all year round

2

### *Lower Energy Costs*

Save up to 30% in cooling costs by lowering building temperatures by several degrees with solar film

3

### *Fade Protection for Furniture*

Dramatically slow fading of furniture, flooring, fabrics, artwork and other interior valuables

4

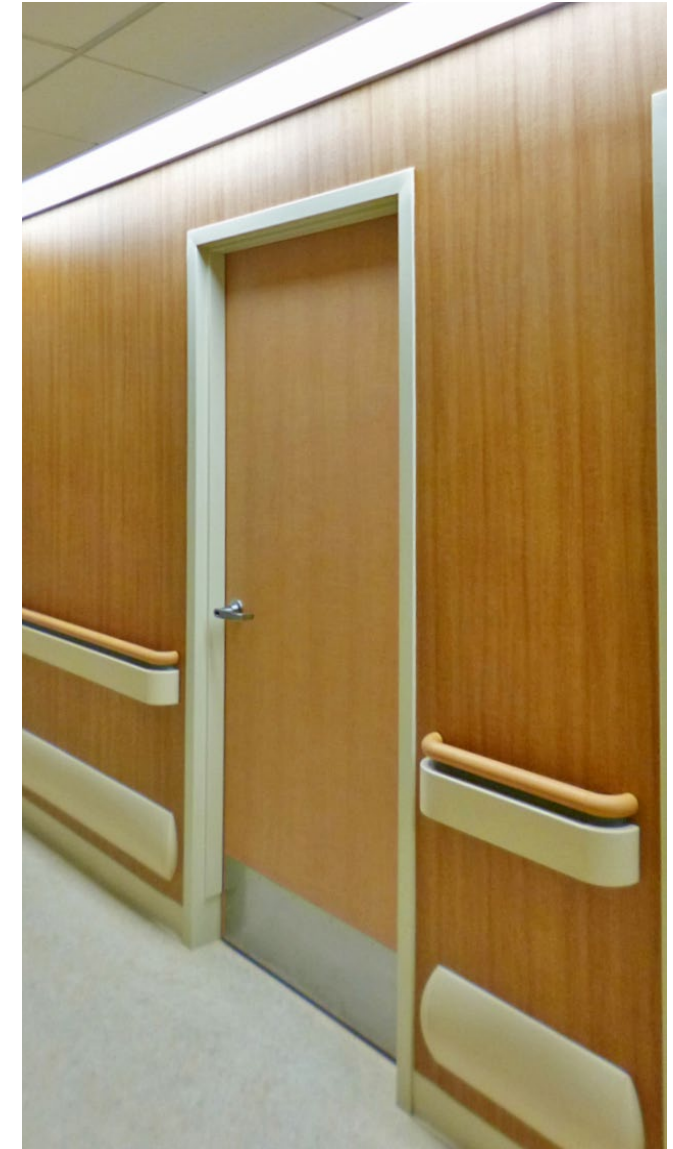
### *Earn LEED Credits*

Improve your building's energy efficiency while earning LEED credits with a carbon neutral, or a carbon negative, solution.



**3M**  
Platinum  
Dealer

# DECORATIVE SPECIALIZED SURFACES



## Update Without Costly Material Replacements

Di-Noc and Belbian specialized surfaces films mimic the real deal in look and texture. We offer over 250 variations of surface textures ranging from industrial concretes to marble and elegantly aged woods – all easy to clean and maintain. Covering a surface can cost far less than replacing the material.



## Contact Us At:

hello@metwest.com

562.426.7701

metwest.com